

Created by **Nature**
Curated by Ambe

Ambe



AMBE PHYTOEXTRACTS PVT. LTD.

✉ info@ambe-group.com 🌐 www.ambe-group.com

About us

Ambe Phytoextracts is engaged in the business of research, development, manufacture and supply of standardized and innovative ingredients for more than a decade now. Nestled in the lap of Himalayas, our manufacturing units are spread over a combined area of over 2,00,000 sq. ft. and in-house state-of-the-art facilities including a DSIR approved R&D and quality testing lab.

Quality

Our products are non-GMO, non-ETO treated, non-irradiated and comply with major international regulations, enabling us to supply to leading companies across the globe.

Expertise

Our expertise is in Bio-actives. At Ambe we work with over 60 different Bio-actives, including some rare ones, to create ingredients that are efficacious and safe.



300+
employees



2 manufacturing
facilities



1500 MT RM/year &
1800 MT finished
products/year



DSIR approved
R&D lab



Global
markets served

Licences



Our range of clinically tested ingredients



Bio-Immune™

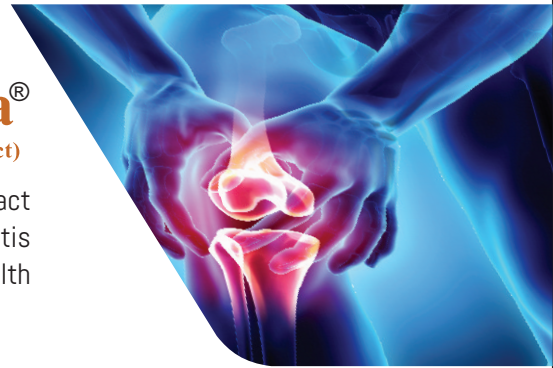
Anti-viral | Immunomodulator

A highly bio-available natural anti-viral and potent immunomodulator with wide spectrum activity.
Oral and nasal application

AKBA Ultra®

(Standardised Boswellia Extract)

Potent complex of Boswellia serrata extract that is clinically tested for reduction in Osteoarthritis symptoms and improving joint health



Pinorox®

(Pine Bark Extract)

A powerful anti-oxidant that has been clinically tested to show improvement in endurance and stamina, while reducing exercise induced inflammation and fatigue



Phaseolean™

(White Kidney Bean Extract)

In-vitro studies show Phaseolean to inhibit **α -amylase** and **α -glucosidase** enzyme activity, making it a powerful ingredient for weight loss and blood sugar management.



SAW PALMETTO

Management of Benign prostatic hyperplasia (BPH) and Alopecia
Oil 80% - 90% (GC)
Powder 45% (GC)



SERRATIOPEPTIDASE

Proteolytic enzyme used for reducing inflammation and mucous.
Powder : 2200 - 2400 IU/mg
Enteric Coated : 2000 IU/mg



BERBERINE

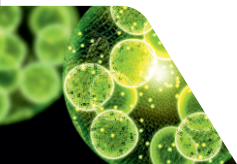
Plays a key role in blood sugar (glucose) metabolism and cardiovascular health
Berberine HCl – 97% • Berberine Sulphate – 97%
• Berberine Granules



SPECIALITY INGREDIENTS

ALGAL OMEGA (DHA+EPA)

- ✓ Veg DHA Oil : 40% - 70%
- ✓ Veg DHA Powder : 10% - 30%
- ✓ Veg Beadlets : 10% - 20%
- ✓ Vegan EPA Oil : 30%
- ✓ Vegan EPA Powder : 15%



ULTRA COLLAGEN

Hydrolyzed marine collagen peptides with low molecular weight (~ 250 Dalton) for complete water solubility and excellent bioavailability
Specifications: 90% Protein (HPLC)



TURMESOL WS

Water soluble curcumin with enhanced Bioavailability
10% - 50% Curcuminoid (HPLC)



TURMEFLO SF

Stain Free Curcumin Beadlets
Direct Compressibility
Cryopulverized Nano Curcumin
95% Curcuminoid (HPLC)



COSMECEUTICALS

CENTELLA EXTRACT

Key Actives: Asiaticoside & Madecassoside - 90%
Benefits : Skin Conditioning,
Under eye care, Anti-aging, Wound healing



HIMBERRY SEED/PULP OIL

Key Active: Omega 3, 6, 7 & 9
Benefits: Skin Hydration,
Intimate hygiene, Anti aging, Anti acne



ALPHA MANGOSTEEN

Key Active: Alpha Mangosteen 90%
Benefits: Anti acne





BOTANICAL EXTRACTS

Ambe manufactures a wide range of standardized herbal extracts that are used in healthcare industry

Name	Source	Biomarker	Standardization	Benefits
Amla (Juice Powder)	<i>Phyllanthus emblica</i>	Vitamin C	3% : Titration	Adaptogen, Antioxidant
Andrographis Extract	<i>Andrographis paniculata</i>	Andrographolides	10% - 95% : HPLC	Immune Support, Respiratory Support, Hepatoprotective
Ashwagandha Root Extract	<i>Withania somnifera</i>	Total Withanolides	2.50% : HPLC 2.5% / 5% / 8% : Gravimetry	Memory Health, Stress Management
Banaba Extract	<i>Lagerstroemia speciosa</i>	Corosolic Acid	1% - 20% : HPLC	Blood Sugar support
Bacopa Extract	<i>Bacopa monnieri</i>	Bacosides	20% - 50% : HPLC	Memory health
Beet Root Extract	<i>Beta vulgaris</i>	Nitrate	10% : HPLC	Sports Nutrition, Natural Colour
Boswellia Extract	<i>Boswellia serrata</i>	Boswellic acids AKBA	50% - 90% : Titration 30%, 60% : HPLC	Joint Health Support
Ginger Extract	<i>Zingiber officinale</i>	Gingerols	5% - 25% : HPLC	Digestive Support, Joint Health
Green Coffee Extract	<i>Coffea robusta</i>	Chlorogenic Acids (Caffeine NMT 2%)	20% - 70% : HPLC	Blood Sugar Management, Weight Management
Guggul Extract	<i>Commiphora mukul</i>	E & Z Guggulsterones	upto 2.5% : HPLC upto 10% : UV	Cardiovascular health
Licorice Extract	<i>Glycyrrhiza glabra</i>	Glabridin Glycyrrhizic Acid	upto 40% : HPLC upto 60% : HPLC	Skin Lightening Immune Support
Mangosteen Extract	<i>Garcinia mangostana</i>	Mangosteen	10% - 90% : HPLC	Skin Health, Anti Acne, UTI
Mucuna Extract	<i>Mucuna pruriens</i>	L-Dopa	10% - 60% : HPLC	Energy Support, Men's Health
Salacia Extract	<i>Salacia Reticulata</i>	Saponins	20% : Gravimetry	Blood Sugar Support
Shilajit Extract	<i>Ashphaltum</i>	Fulvic acid Fulvic acids (Total Acids)	2.50% : Gravimetry 10% -50% : Gravimetry	Adaptogen, Sports nutrition, Immunity
Senna Extract	<i>Senna alexandrina</i>	Sennosides	20% : HPLC 10% - 20% : UV	Laxative
Tulsi Extract	<i>Ocimum sanctum</i>	Ursolic Acid Bitters	2.50% : HPLC 2.5% - 5% : Gravimetry	Rejuvenation
Turmeric Extract	<i>Curcuma longa</i>	Curcuminoids	95% : HPLC	Immunity, Skin Health
Valerian Extract	<i>Valeriana officinalis</i>	Valerinic acid	0.8% Powder : HPLC 10% oleoresin : HPLC	Sleep Health



CAROTENOIDS

Experience the Radiance of Health with our Carotenoid



▶ ASTAXANTHIN

Oil : 5% - 10% | Powder 1% - 5%
Beadlets : 2% - 5% | Emulsion 1%

▶ LUTEIN FREE

Oil : 10% - 20% | Powder 5% - 10%
Beadlets : 10% - 20% | Emulsion 1%-5%

▶ LUTEIN ESTER

Oil : 10% - 40% | Powder 20% - 60%
Beadlets : 10% | Emulsion 1%-5%

▶ NATURAL BETACAROTENE

Oil : 5% - 30% | Powder 7.5% - 20%
Beadlets : 10% - 30% | Emulsion 1%-5%

▶ NATURAL LYCOPENE

Oil : 6% - 20% | Powder 5% - 10%
Beadlets : 6% - 20% | Emulsion 1%-5%

▶ ZEAXANTHIN

Oil : 5% - 14% | Powder 1% - 20%
Beadlets : 5% - 10% | Emulsion 1%-5%

▶ NATURAL MIXED CAROTENOIDS

Oil : 10% - 30% | Powder 5% - 20%
Beadlets : 2% - 10% | Emulsion 1%-5%

AMBE PHYTOEXTRACTS PVT. LTD.

(FSSC 22000, HACCP, GMP, KOSHER, HALAL & ISO 9001:2015 CERTIFIED CO.)

Corporate Office:-

A - 144, Sector - 63, Noida, Gautam Buddh Nagar,
Uttar Pradesh - 201301 (INDIA)

- Tel: +91 120 4505353
- E-mail: info@ambe-group.com
- Website: www.ambe-group.com

Manufacturing Units:-

Pauri Garhwal,
Uttarakhand - 246276 (INDIA)

SIIDCUL, Haridwar,
Uttarakhand - 249403 (INDIA)